

KHSAA Basketball - Game Box Score

Graves County Eagles vs. South Laurel Cardinals

Date: 03/17/2006 Time: 12 Noon Site: Rupp Arena-Lexington, KY Attendance: N

Visitors: South Laurel Cardinals

##	Name	P	FG	3 Pt	FT	PTS	ORB	DRB	TR	PF	AST	TO	BS	ST	MIN
11	Billy Jones		0/0	0/0	0/0	0	0	0	0	0	0	0	0	0	DNP
13	* Ty Proffitt		7/14	3/4	1/1	18	1	0	1	0	1	1	0	2	36:00
15	David Goodin		0/0	0/0	0/0	0	1	1	2	4	3	0	0	3	22:31
22	Zach Marcum		0/1	0/0	0/0	0	0	0	0	2	0	1	0	2	11:53
23	* Josh Riley		0/2	0/1	0/0	0	0	1	1	0	1	1	0	0	9:33
24	Mark Conley		0/0	0/0	0/0	0	0	0	0	0	0	0	0	0	DNP
25	Casey Hamm		0/0	0/0	0/0	0	0	0	0	0	0	0	0	0	DNP
32	George Cress		0/0	0/0	0/0	0	0	0	0	0	0	0	0	0	DNP
33	Phillip Hibbard		0/0	0/0	0/0	0	0	0	0	0	0	0	0	0	DNP
34	* Trey Smith		6/11	3/6	1/1	16	1	1	2	3	1	0	4	0	31:00
43	* Jordan Hammonds		2/8	0/2	1/2	5	2	1	3	1	2	0	0	4	33:52
44	Rusty Siler		0/0	0/0	0/0	0	0	0	0	0	0	0	0	0	DNP
54	* Walt Allen		2/9	0/1	2/6	6	4	1	5	1	2	1	3	0	35:11
12	Zach Johnson		0/0	0/0	0/0	0	0	0	0	0	0	0	0	0	DNP
51	Jordan Bortnem		0/0	0/0	0/0	0	0	0	0	0	0	0	0	0	DNP
	Team						2	1	3						
	Totals		17/45	6/14	5/10	45	11	6	17	11	10	4	7	11	180
	Total FG		1st Half	9/23	39.1%	2nd Half	5/16	31.3%	OT	3/6	50.0%	Game	17/45	37.8%	
	3 PT FG		1st Half	3/7	42.9%	2nd Half	1/5	20.0%	OT	2/2	100%	Game	6/14	42.9%	
	Free Throws		1st Half	2/2	100%	2nd Half	3/8	37.5%	OT	0/0	0.00%	Game	5/10	50.0%	

Home: Graves County Eagles

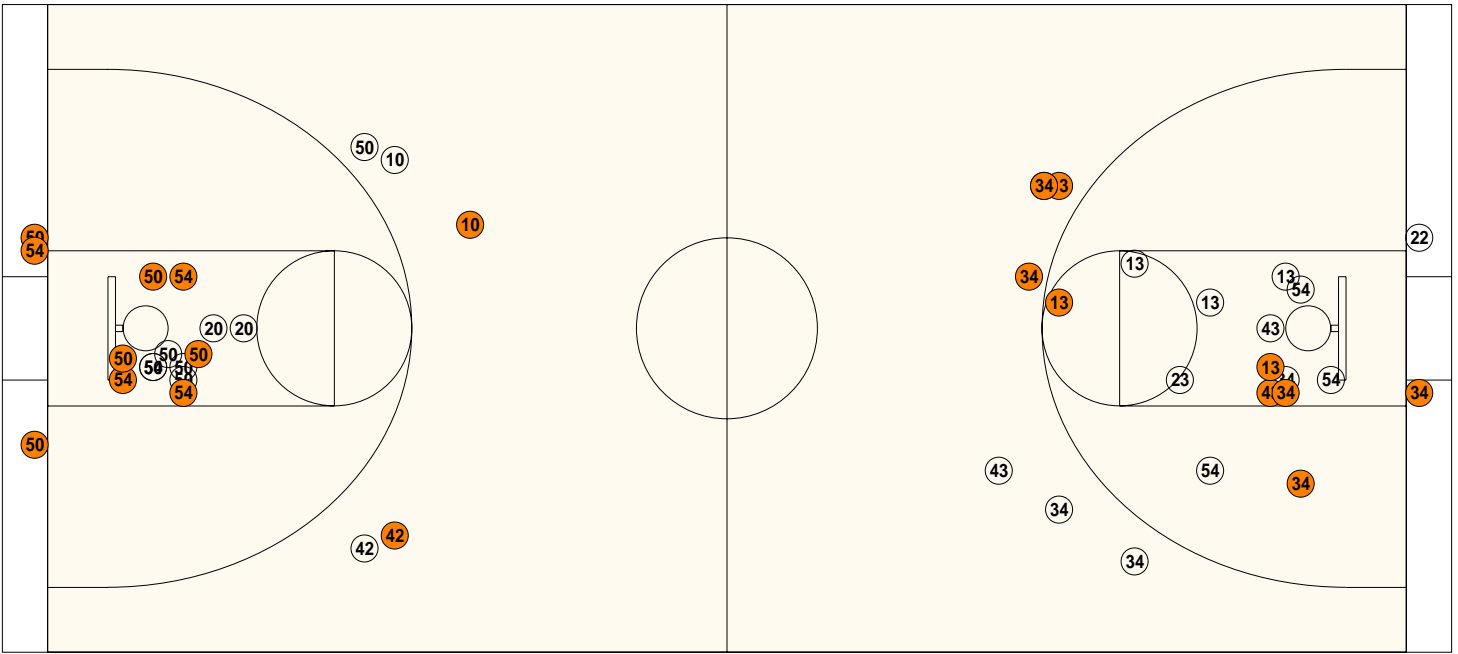
##	Name	P	FG	3 Pt	FT	PTS	ORB	DRB	TR	PF	AST	TO	BS	ST	MIN
10	* Zach Sims		1/3	1/3	1/2	4	1	2	3	0	2	5	0	0	35:57
12	Justin Towery		0/0	0/0	0/0	0	0	1	1	1	0	0	0	0	3:24
20	* Brett Wiggins		1/3	0/0	0/0	2	1	1	2	1	2	0	0	0	34:13
24	Andrew Sanderson		0/0	0/0	0/0	0	0	0	0	0	0	0	0	0	DNP
30	Dustin McClain		0/0	0/0	2/2	2	1	1	2	0	0	0	0	0	5:51
32	Ryan Williams		0/0	0/0	0/0	0	0	0	0	0	0	0	0	0	DNP
34	Eric Stembridge		0/0	0/0	0/0	0	0	0	0	0	0	0	0	0	DNP
40	Kory Ray		0/0	0/0	0/0	0	0	0	0	0	0	0	0	0	DNP
42	* Matt Kimbler		1/3	1/3	0/0	3	0	3	3	0	1	6	0	0	35:36
44	Steven Jackson		0/0	0/0	0/0	0	0	0	0	0	0	0	0	0	DNP
50	* Jamie King		8/15	0/1	0/0	16	1	3	4	3	3	1	0	0	31:27
52	Cody Harris		0/0	0/0	0/0	0	0	0	0	0	0	0	0	0	0:03
54	* Randon Cavette		8/12	0/0	3/3	19	4	8	12	4	5	3	1	0	33:29
14	Josh Campbell		0/0	0/0	0/0	0	0	0	0	0	0	0	0	0	DNP
22	Austin Jameson		0/0	0/0	0/0	0	0	0	0	0	0	0	0	0	DNP
	Team						3	1	4						
	Totals		19/36	2/7	6/7	46	11	20	31	9	13	15	1	0	180
	Total FG		1st Half	11/21	52.4%	2nd Half	4/11	36.4%	OT	4/4	100%	Game	19/36	52.8%	
	3 PT FG		1st Half	2/5	40.0%	2nd Half	0/2	0.00%	OT	0/0	0.00%	Game	2/7	28.6%	
	Free Throws		1st Half	1/1	100%	2nd Half	4/4	100%	OT	1/2	50.0%	Game	6/7	85.7%	

	SLaur	Grav		SLaur	Grav		SLaur	Grav
Free Throw Pts	5	6	3Pt Points	18	6	Pts/Possession	1.07	1.07
Pts off Turnovers	11	2	2nd Chance Points	10	6	Pts off Bench	0	2
Total Rebounds	17	31	Team Rebounds	3	4	Dead Ball Reb	2	1
Off Rebound %	35.5	64.7	Def Rebound %	35.3	64.5	Total Rebound %	35.4	64.6
3Pt Efficiency	+19.2	-10.5	Def. Stops	21	24	Pts/Shot	0.90	1.18
Technical Fouls	SLaur	None						
	Grav	None						
Officials	James Blankenship, Scott Johnson, Tony Beard							

	Qtr 1	Qtr 2	Qtr 3	Qtr 4	OT 1	OT 2	OT 3	OT 4	Total
South Laurel Cardinals	7	16	11	3	8	0	0	0	45
Graves County Eagles	12	13	10	2	9	0	0	0	46

Largest Lead Grav 6 SLaur 0 (6 pts) **Lead Changes** 10 **Number of Ties** 5
Comments: None

FIRST HALF



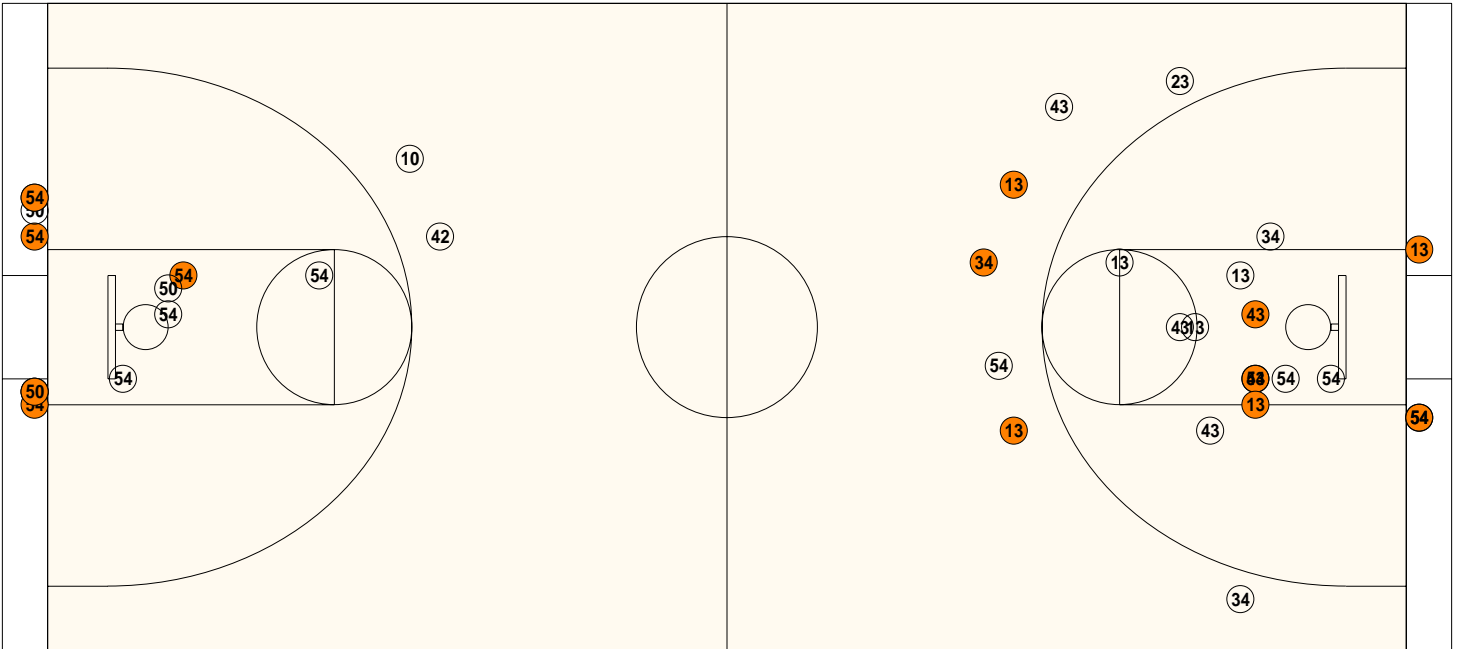
Graves County

Shooting	Pts	Pts
2FG 9/16 (56.3%)	18	Pts/Shot 1.19
3FG 2/5 (40.0%)	6	2nd Eff Pts 4
TFG 11/21 (52.4%)		Pts off TO's 2
FT 1/1 (100%)	1	3Pt Eff +2.5
Scoring Distribution: 2FG 72.0% 3FG 24.0% FT 4.0%		

South Laurel

Shooting	Pts	Pts
2FG 6/16 (37.5%)	12	Pts/Shot 0.96
3FG 3/7 (42.9%)	9	2nd Eff Pts 3
TFG 9/23 (39.1%)		Pts off TO's 7
FT 2/2 (100%)	2	3Pt Eff +17.9
Scoring Distribution: 2FG 52.2% 3FG 39.1% FT 8.7%		

SECOND HALF



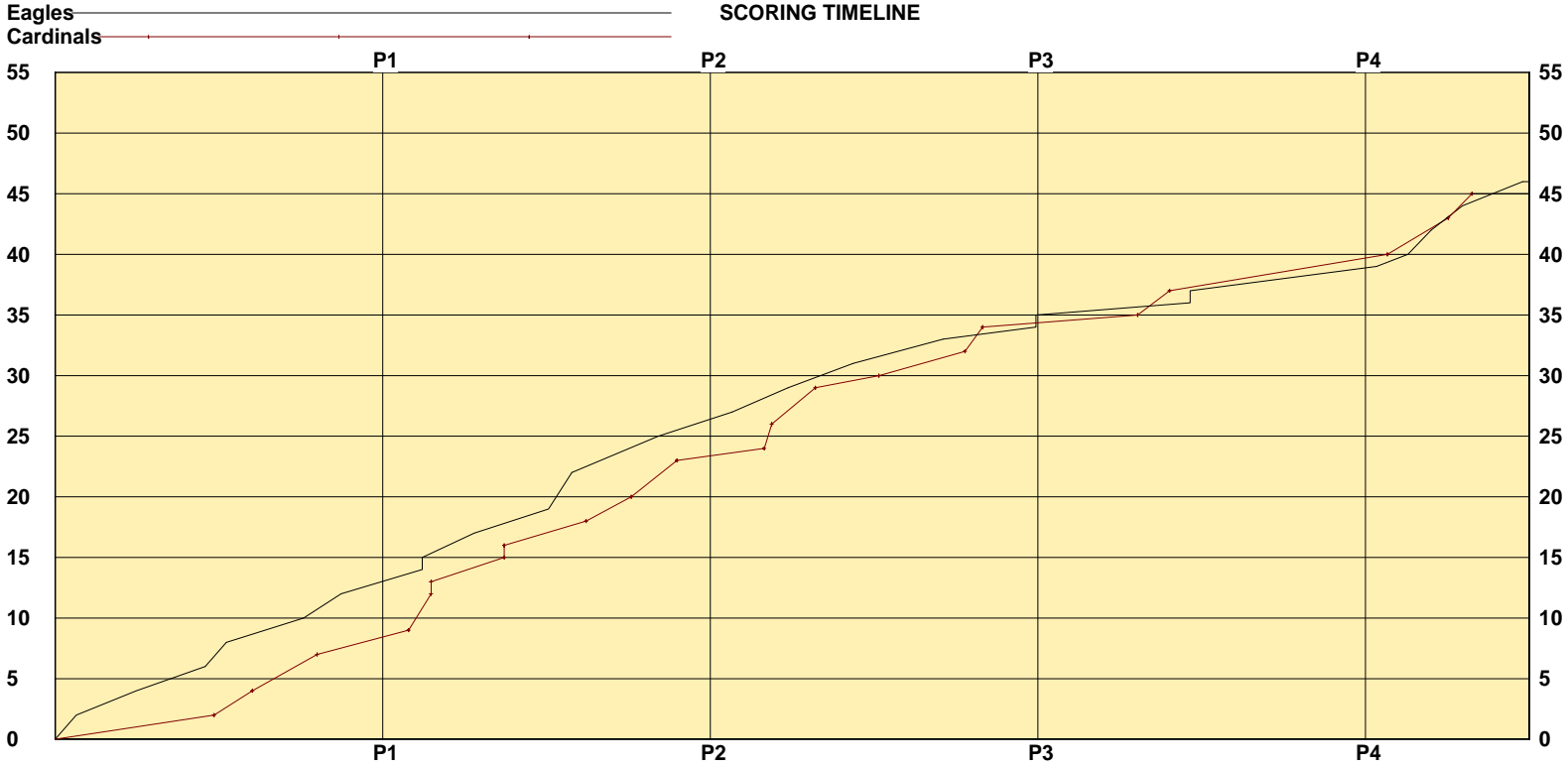
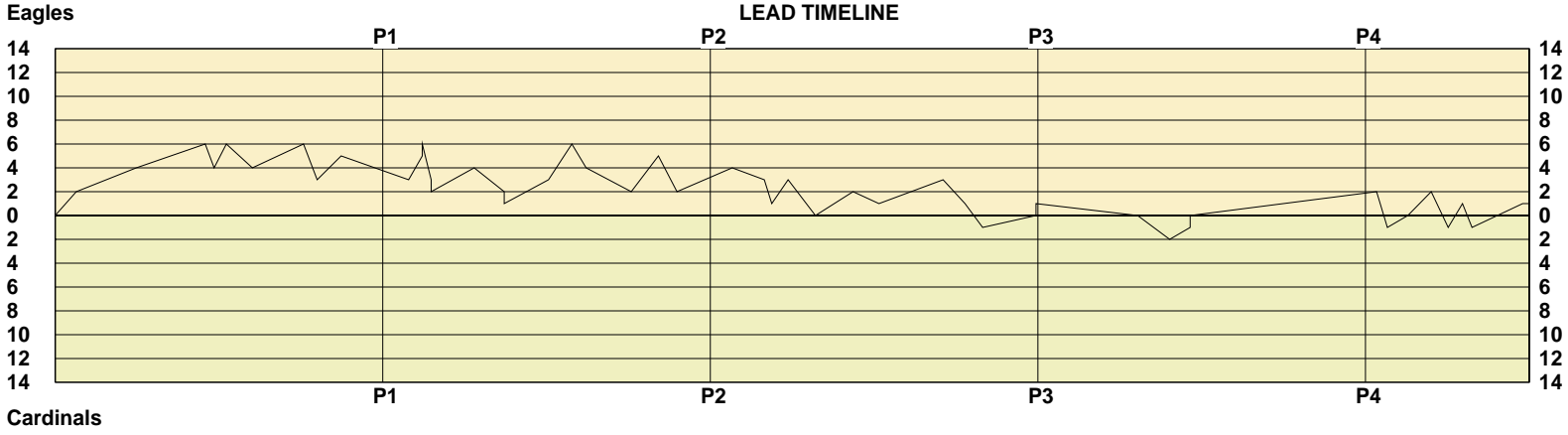
Graves County

Shooting	Pts	Pts
2FG 8/13 (61.5%)	16s	Pts/Shot 1.17
3FG 0/2 (0.00%)	0	2nd Eff Pts 2
TFG 8/15 (53.3%)		Pts off TO's 0
FT 5/6 (83.3%)	5	3Pt Eff -41.0
Scoring Distribution: 2FG 76.2% 3FG 0.0% FT 23.8%		

South Laurel

Shooting	Pts	Pts
2FG 5/15 (33.3%)	10s	Pts/Shot 0.85
3FG 3/7 (42.9%)	9	2nd Eff Pts 7
TFG 8/22 (36.4%)		Pts off TO's 4
FT 3/8 (37.5%)	3	3Pt Eff +20.6
Scoring Distribution: 2FG 45.5% 3FG 40.9% FT 13.6%		

KHSAA Basketball - Scoring Timeline Report
 Graves County Eagles vs. South Laurel Cardinals
 DATE: 03/17/2006 TIME: 12 Noon SITE: Rupp Arena-Lexington, KY



Largest Lead Grav 6 SLaur 0 (6 pts) Lead Changes 10 Number of Ties 5

KHSAA Basketball - Play by Play Report - Scoring Only (pg 1)

Graves County Eagles vs. South Laurel Cardinals

Date: 03/17/2006 Time: 12 Noon Site: Rupp Arena-Lexington, KY Attendance: N

Name	Action	Action	Score	Clock	Diff	Name	Action	Action
R Cavette	Putback Made		2-0	1 7:29	+2 (L1)			
J King	FG Made		4-0	1 6:01	+4			
R Cavette	FG Made	J King Assist	6-0	1 4:20	+6			
			6-2	1 4:07	+4	J Hammonds	FG Made	T Proffitt Assist
J King	Putback Made		8-2	1 3:49	+6			
			8-4	1 3:11	+4	T Proffitt	FG Made	J Riley Assist
J King	FG Made		10-4	1 1:56	+6			
			10-7	1 1:36	+3	T Smith	3Pt Made	D Goodin Assist
J King	Layup Made	R Cavette Assist	12-7	1 1:01	+5			

End of Period Summary Eagles 12 Cardinals 7

Largest Lead: Eagles 6 Cardinals 0 (6 pts)
 Lead in Period: Eagles 6 Cardinals 0 (6 pts)
 5 for 2 oppo pts
 5 for 4 pts
 6/12 for 50.0 %
 0/0 for 0.00 %

Turnovers
 2nd Chances
 Field Goals
 Free Throws

Lead Changes: 1 Ties: 0
 Lead Changes: 0 Ties: 0 (this period)
 3 for 2 oppo pts
 1 for 0 pts
 3/10 for 30.0 %
 0/0 for 0.00 %

			12-9	2 7:22	+3	T Smith	FG Made	
R Cavette	FG Made	J King Assist	14-9	2 7:02	+5			
R Cavette	FT Made		15-9	2 7:02	+6	T Smith	Personal Foul	
			15-12	2 6:49	+3	T Proffitt	3Pt Made	J Hammonds Assist
			15-13	2 6:49	+2	T Proffitt	FT Made	
J King	Layup Made	R Cavette Assist	17-13	2 5:46	+4			
			17-15	2 5:02	+2	T Smith	Layup Made	D Goodin Assist
R Cavette	Personal Foul		17-16	2 5:02	+1	T Smith	FT Made	
R Cavette	Layup Made	J King Assist	19-16	2 3:57	+3			
M Kimbler	3Pt Made	B Wiggins Assist	22-16	2 3:23	+6			
			22-18	2 3:02	+4	T Smith	FG Made	
			22-20	2 1:56	+2	T Proffitt	FG Made	
Z Sims	3Pt Made	M Kimbler Assist	25-20	2 1:16	+5			
			25-23	2 0:49	+2	T Smith	3Pt Made	W Allen Assist

End of Period Summary Eagles 25 Cardinals 23

Largest Lead: Eagles 6 Cardinals 0 (6 pts)
 Lead in Period: Eagles 15 Cardinals 9 (6 pts)
 4 for 5 oppo pts
 3 for 0 pts
 5/9 for 55.6 %
 1/1 for 100 %

Turnovers
 2nd Chances
 Field Goals
 Free Throws

Lead Changes: 1 Ties: 0
 Lead Changes: 0 Ties: 0 (this period)
 0 for 0 oppo pts
 2 for 3 pts
 6/13 for 46.2 %
 2/2 for 100 %

B Wiggins	Layup Made		27-23	3 7:28	+4			
R Cavette	Personal Foul		27-24	3 6:41	+3	W Allen	FT Made	
			27-26	3 6:30	+1	T Proffitt	Layup Made	
R Cavette	Layup Made		29-26	3 6:06	+3			
			29-29	3 5:26 (T1)		T Smith	3Pt Made	W Allen Assist
R Cavette	Layup Made	Z Sims Assist	31-29	3 4:31	+2			
R Cavette	Personal Foul		31-30	3 3:53	+1	J Hammonds	FT Made	
R Cavette	FG Made	Z Sims Assist	33-30	3 2:19	+3			
			33-32	3 1:47	+1	W Allen	Layup Made	
			33-34	3 1:21	-1 (L2)	J Hammonds	FG Made	

KHSAA Basketball - Play by Play Report - Scoring Only (pg 2)
Graves County Eagles vs. South Laurel Cardinals
Date: 03/17/2006 Time: 12 Noon Site: Rupp Arena-Lexington, KY Attendance: N

Name	Action	Action	Score	Clock	Diff	Name	Action	Action
D McClain	FT Made		34-34	3 0:03	(T2)			
D McClain	FT Made		35-34	3 0:03	+1 (L3)			
End of Period Summary Eagles 35 Cardinals 34								
Largest Lead: Eagles 6 Cardinals 0 (6 pts)						Lead Changes: 3 Ties: 2		
Lead in Period: Eagles 27 Cardinals 23 (4 pts)						Lead Changes: 2 Ties: 2 (this period)		
1 for 3 oppo pts						1 for 0 oppo pts		
3 for 2 pts						5 for 6 pts		
4/9 for 44.4 %						4/9 for 44.4 %		
2/2 for 100 %						2/4 for 50.0 %		
Turnovers								
2nd Chances								
Field Goals								
Free Throws								
			35-35	4 5:34	(T3)	W Allen	FT Made	
			35-37	4 4:47	-2 (L4)	W Allen	FG Made	T Smith Assist
R Cavette	FT Made		36-37	4 4:17	-1	D Goodin	Personal Foul	
R Cavette	FT Made		37-37	4 4:17	(T4)			

End of Period Summary Eagles 37 Cardinals 37								
Largest Lead: Eagles 6 Cardinals 0 (6 pts)						Lead Changes: 4 Ties: 4		
Lead in Period: Eagles 35 Cardinals 37 (2 pts)						Lead Changes: 0 Ties: 2 (this period)		
5 for 1 oppo pts						0 for 0 oppo pts		
0 for 0 pts						1 for 1 pts		
0/2 for 0.00 %						1/7 for 14.3 %		
2/2 for 100 %						1/4 for 25.0 %		
Turnovers								
2nd Chances								
Field Goals								
Free Throws								
J King	Layup Made	R Cavette Assist	39-37	5 3:44	+2 (L5)			
			39-40	5 3:28	-1 (L6)	T Proffitt	3Pt Made	D Goodin Assist
Z Sims	FT Made		40-40	5 2:58	(T5)			
J King	Layup Made	R Cavette Assist	42-40	5 2:24	+2 (L7)			
			42-43	5 1:59	-1 (L8)	T Proffitt	3Pt Made	J Hammonds Assist
R Cavette	Layup Made	B Wiggins Assist	44-43	5 1:38	+1 (L9)			
			44-45	5 1:24	-1 (L10)	T Proffitt	FG Made	
J King	Layup Made	R Cavette Assist	46-45	5 0:10	+1 (L11)			

End of Period Summary Eagles 46 Cardinals 45								
Largest Lead: Eagles 6 Cardinals 0 (6 pts)						Lead Changes: 11 Ties: 5		
Lead in Period: Eagles 39 Cardinals 37 (2 pts)						Lead Changes: 6 Ties: 1 (this period)		
0 for 0 oppo pts						0 for 0 oppo pts		
0 for 0 pts						2 for 0 pts		
4/4 for 100 %						3/6 for 50.0 %		
1/2 for 50.0 %						0/0 for 0.00 %		
Turnovers								
2nd Chances								
Field Goals								
Free Throws								

OFFICIAL BASKETBALL BOX SCORE
 South Laurel Cardinals vs Graves County Eagles

03/17/2006 12 Noon
 Final Box Score

Rupp Arena
 Lexington, KY

No.	South Laurel Cardinals	Total FG		3-point		Free throw		Rebounds			F	TP	A	TO	BLK	STL	MIN	
		FG	FGA	FG	FGA	FT	FTA	Off	Def	Tot								
11	Billy Jones	0	0	0	0	0	0	0	0	0	0	0	0	0	0	0	DNP	
13	Ty Proffitt	7	14	3	4	1	1	1	0	1	0	18	1	1	0	2	36:00	
15	David Goodin	0	0	0	0	0	0	0	1	1	2	4	0	3	0	3	22:31	
22	Zach Marcum	0	1	0	0	0	0	0	0	0	0	2	0	1	0	2	11:53	
23	Josh Riley	0	2	0	1	0	0	0	0	1	1	0	0	1	0	0	9:33	
54	Walt Allen	2	9	0	1	2	6	4	1	5	1	6	2	1	3	0	35:11	
43	Jordan Hammonds	2	8	0	2	1	2	2	1	3	1	5	2	0	0	4	33:52	
34	Trey Smith	6	11	3	6	1	1	1	1	2	3	16	1	0	4	0	31:00	
24	Mark Conley	0	0	0	0	0	0	0	0	0	0	0	0	0	0	0	DNP	
25	Casey Hamm	0	0	0	0	0	0	0	0	0	0	0	0	0	0	0	DNP	
32	George Cress	0	0	0	0	0	0	0	0	0	0	0	0	0	0	0	DNP	
33	Phillip Hibbard	0	0	0	0	0	0	0	0	0	0	0	0	0	0	0	DNP	
44	Rusty Siler	0	0	0	0	0	0	0	0	0	0	0	0	0	0	0	DNP	
12	Zach Johnson	0	0	0	0	0	0	0	0	0	0	0	0	0	0	0	DNP	
51	Jordan Bortnem	0	0	0	0	0	0	0	0	0	0	0	0	0	0	0	DNP	
Team (Included in Totals)								2										
Totals		17	45	6	14	5	10	11	6	17	11	45	10	4	7	11	180	

Total FG%: 1st half 9 - 23 (39.1%) 2nd half 5 - 16 (31.3%) OT 3 - 6 (50.0%) Game 17 - 45 (37.8%) Deadball
 3Pt FG%: 1st half 3 - 7 (42.9%) 2nd half 1 - 5 (20.0%) OT 2 - 2 (100%) Game 6 - 14 (42.9%) rebounds
 FT%: 1st half 2 - 2 (100%) 2nd half 3 - 8 (37.5%) OT 0 - 0 (0.00%) Game 5 - 10 (50.0%) 2

No.	Graves County Eagles	Total FG		3-point		Free throw		Rebounds			F	TP	A	TO	BLK	STL	MIN	
		FG	FGA	FG	FGA	FT	FTA	Off	Def	Tot								
10	Zach Sims	1	3	1	3	1	2	1	2	3	0	4	2	5	0	0	35:57	
12	Justin Towery	0	0	0	0	0	0	0	1	1	1	0	0	0	0	0	3:24	
20	Brett Wiggins	1	3	0	0	0	0	1	1	2	1	2	2	0	0	0	34:13	
24	Andrew Sanderson	0	0	0	0	0	0	0	0	0	0	0	0	0	0	0	DNP	
30	Dustin McClain	0	0	0	0	2	2	1	1	2	0	2	0	0	0	0	5:51	
42	Matt Kimbler	1	3	1	3	0	0	0	3	3	0	3	1	6	0	0	35:36	
54	Randon Cavette	8	12	0	0	3	3	4	8	12	4	19	5	3	1	0	33:29	
50	Jamie King	8	15	0	1	0	0	1	3	4	3	16	3	1	0	0	31:27	
52	Cody Harris	0	0	0	0	0	0	0	0	0	0	0	0	0	0	0	0:03	
32	Ryan Williams	0	0	0	0	0	0	0	0	0	0	0	0	0	0	0	DNP	
34	Eric Stenbridge	0	0	0	0	0	0	0	0	0	0	0	0	0	0	0	DNP	
40	Kory Ray	0	0	0	0	0	0	0	0	0	0	0	0	0	0	0	DNP	
44	Steven Jackson	0	0	0	0	0	0	0	0	0	0	0	0	0	0	0	DNP	
14	Josh Campbell	0	0	0	0	0	0	0	0	0	0	0	0	0	0	0	DNP	
22	Austin Jameson	0	0	0	0	0	0	0	0	0	0	0	0	0	0	0	DNP	
Team (Included in Totals)								3										
Totals		19	36	2	7	6	7	11	20	31	9	46	13	15	1	0	180	

Total FG%: 1st half 11 - 21 (52.4%) 2nd half 4 - 11 (36.4%) OT 4 - 4 (100%) Game 19 - 36 (52.8%) Deadball
 3Pt FG%: 1st half 2 - 5 (40.0%) 2nd half 0 - 2 (0.00%) OT 0 - 0 (0.00%) Game 2 - 7 (28.6%) rebounds
 FT%: 1st half 1 - 1 (100%) 2nd half 4 - 4 (100%) OT 1 - 2 (50.0%) Game 6 - 7 (85.7%) 1

Technical Fouls: None

Attendance: N

Officials: James Blankenship, Scott Johnson, Tony Beard

Score by Period	1st	2nd	3rd	4th	OT	Final	Record	Overall	Conf
South Laurel Cardinals	7	16	11	3	8	45	Cardinals		
Graves County Eagles	12	13	10	2	9	46	Eagles		

Eagles Cardinals		Eagles Cardinals		Eagles Cardinals	
Points off Turnovers	2	11	Second Effort Points	6	10
Points in the Paint	28	8	3 Point Points	6	18
3pt Efficiency	-10.5	+19.2	Points/Shot	1.18	0.90
Largest Lead	6	0 (6 pts)	Lead Changes	10	
			Bench Points	2	0
			Free Throw Points	6	5
			Defensive Stops	24	21
			Number of Ties	5	

Game comments: None